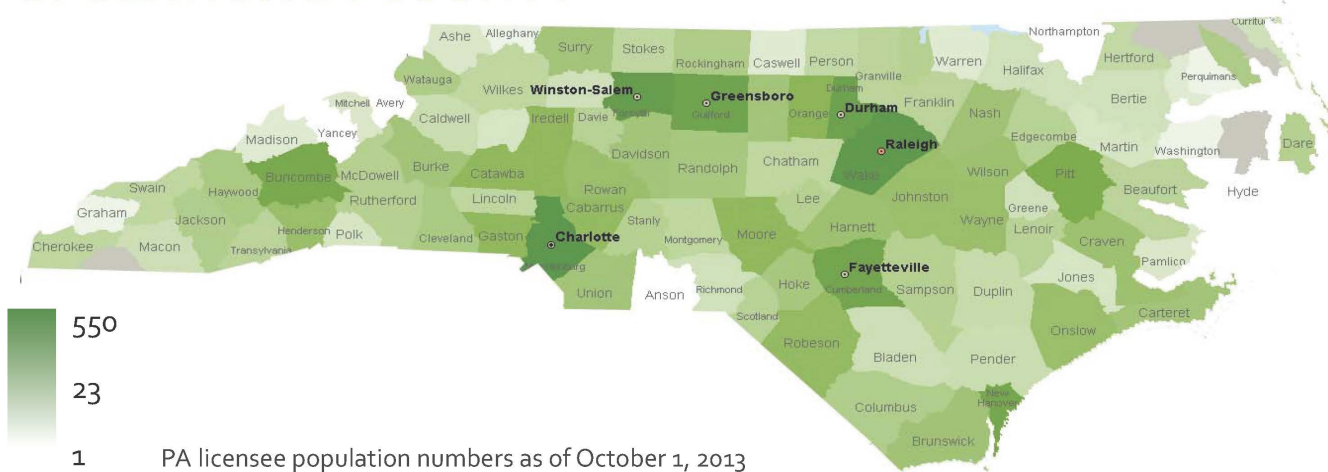
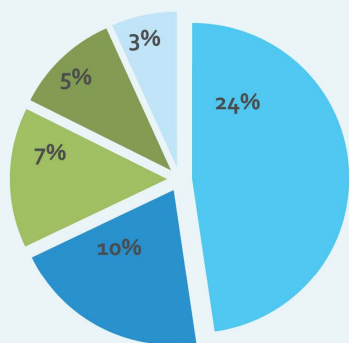


PA POPULATION BY COUNTY



POPULAR PA AREAS OF PRACTICE



Nearly 50% of the PA population reports one of the following as their area of practice.

- General practice, internal medicine and family medicine
- Urgent Care
- Emergency Medicine
- Orthopedic Surgery
- Pediatrics

The Board licenses 5,030 PAs. The above chart represents only those specialties listed.

WHERE ARE PAS GOING?

Largest increase in PA population.

Wake
Mecklenburg
Cumberland
Forsyth



The above counties saw the largest increase in PA population over a five year span.

Largest decrease in PA population.

Bertie
Davidson
Washington
Avery

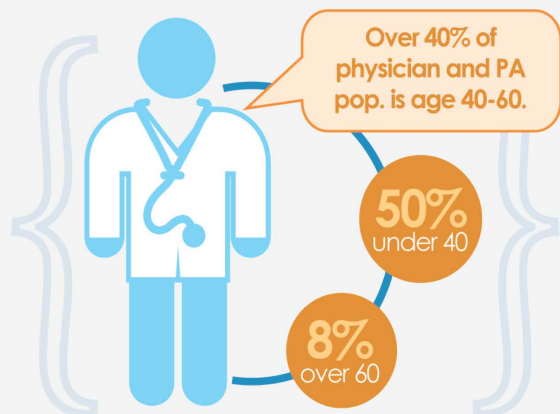


The above counties saw the largest decrease in PA population over a five year span.

TOP FIVE Physician Assistant PROGRAMS

Wake Forest School of Medicine • Duke University School of Medicine
East Carolina University • Methodist College • Medical University of South Carolina

PA POPULATION BY AGE



PA POPULATION GROWTH OVER FIVE YEARS

