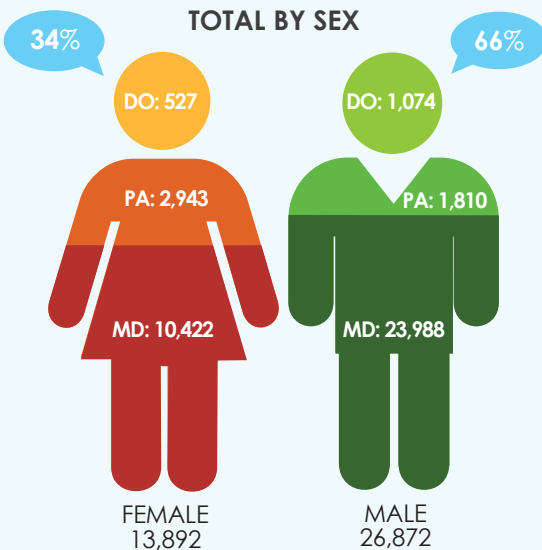
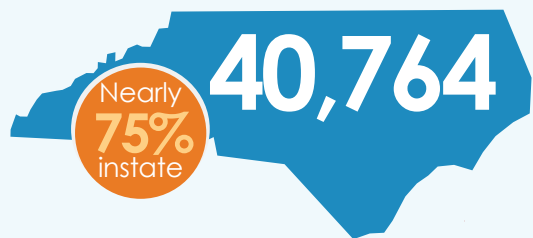
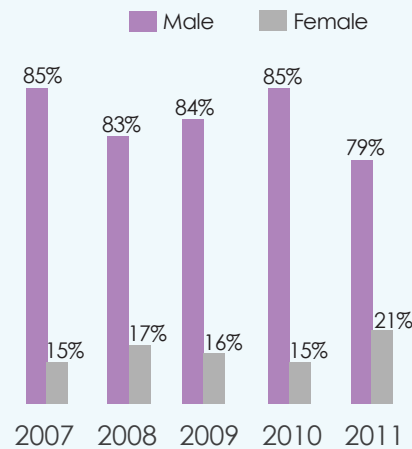


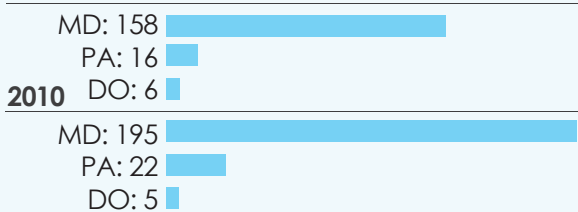
TOTAL PHYSICIAN AND PA POP.



PHYSICIANS AND PAs WITH PUBLIC ACTION: SEX



WITH PUBLIC BOARD ACTIONS

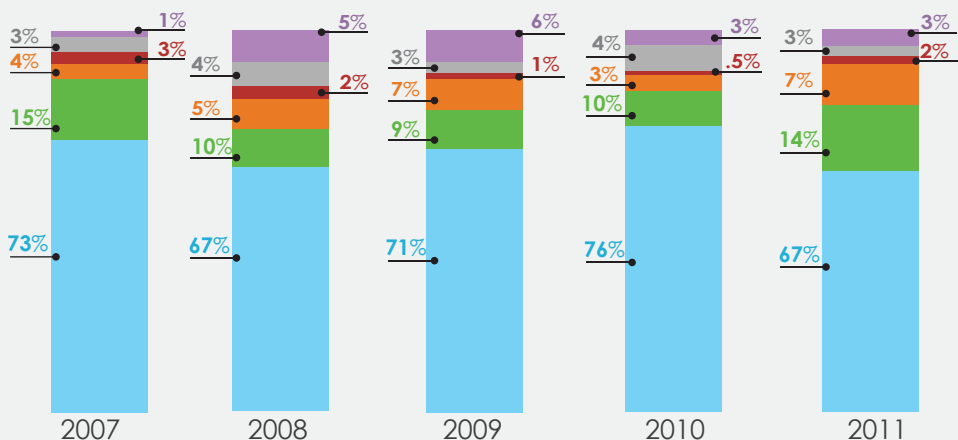


TOTAL BY RACE

American Indian/Alaskan Native = 160 | Asian-American/Pacific Islander = 3,082 | Black/Non-Hispanic = 2,696 | Hispanic = 948 | White/Non-Hispanic = 29,572 | Other = 1,572 | Not Reported = 2,734

PHYSICIANS AND PAs WITH PUBLIC ACTION: RACE

American Indian/Alaskan Native (Red)
 Asian-American/Pacific Islander (Orange)
 Black/Non-Hispanic (Green)
 Hispanic (Purple)
 White/Non-Hispanic (Light Blue)
 Other (Grey)



Figures do not equal 100% because some licensees have not reported their race.

RATE OF ACTIONS PER 1,000 LICENSEES: SPECIALTY*

- OB/GYN = 8 actions/1,000 licensees
- Family Medicine = 7 actions/1,000 licensees
- Psychiatry = 7 actions/1,000 licensees
- Emergency Medicine = 6 actions/1,000 licensees
- Internal Medicine = 5 actions/1,000 licensees
- Orthopedic Surgery = 5 actions/1,000 licensees
- General Surgery = 4 actions/1,000 licensees
- Anesthesiology = 3 actions/1,000 licensees

*Rates reflect the total number of actions averaged over five years (2007-2011) divided by licensee population as of January 2013.

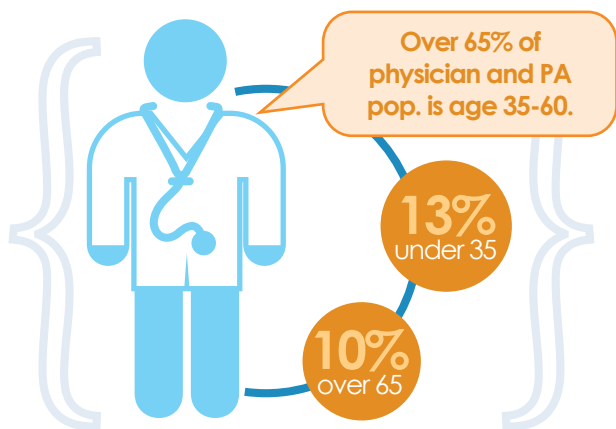


RATE OF ACTIONS PER 1,000 LICENSEES: RACE*

American Indian/Alaskan Native = 19/1,000 | Asian-American/Pacific Islander = 3/1,000 | Black/Non-Hispanic = 9/1,000 | Hispanic = 6/1,000 | White/Non-Hispanic = 5/1,000 | Other = 4/1,000

*Rates calculated using average number of actions: 2007-2011

TOTAL PHYSICIAN AND PA POP: AGE



WITH PUBLIC BOARD ACTIONS

